



GEOPANEL *Art*



GEOPLAST S.p.A.

Via Martiri della Libertà, 6/8 - 35010 Grantorto (Pd) - Italia
Tel +39 049 9490289 - Fax +39 049 9494028
e-mail: geoplast@geoplast.it - www.geoplast.it

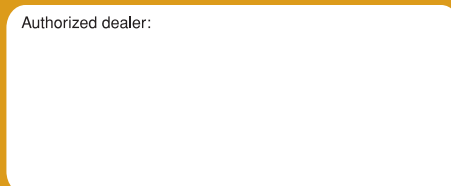


ST. 03/2010

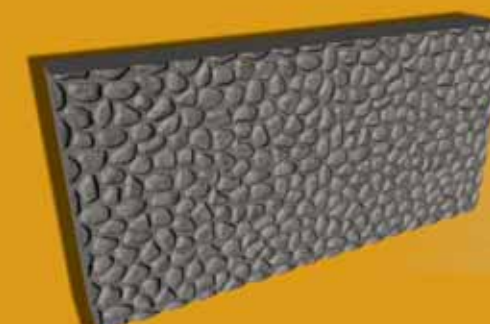


The textured wall formwork system

Authorized dealer:



rev.000



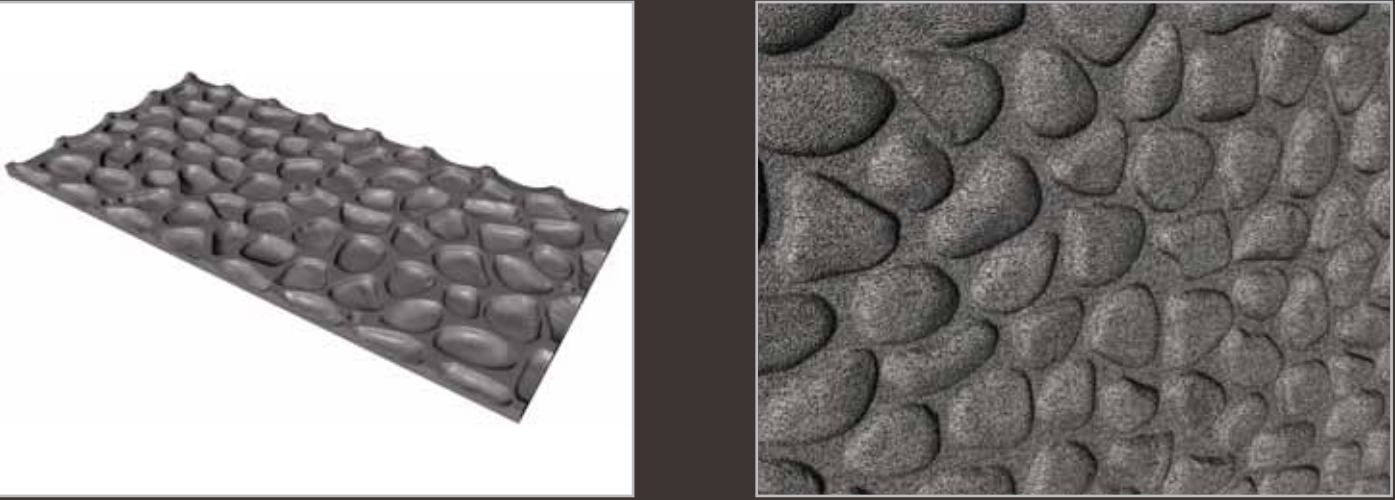
casseforme
formwork

www.geoplast.it

GEOPANEL ART® CHARACTERISTICS

GEOPANEL ART® is a reusable and modular formwork system for the construction of textured reinforced concrete walls. Made of ABS, **GEOPANEL ART®** is used in combination with **GEOPANEL®**: the two elements constitute together a high-productivity textured concrete wall formwork system. The concrete surface receives the decoration from the panels and the result is a wall suitable for direct painting or ready for further decoration in order to achieve an even more realistic and creative look.

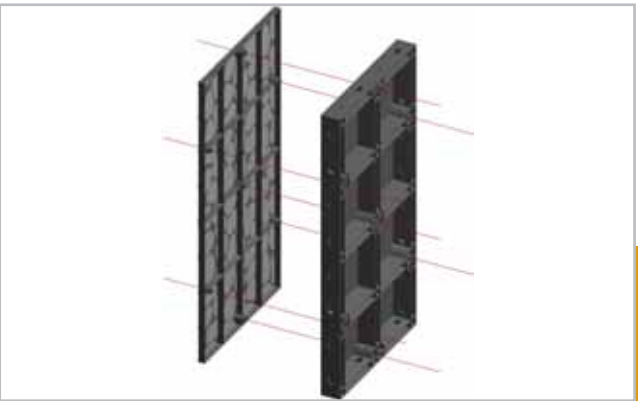
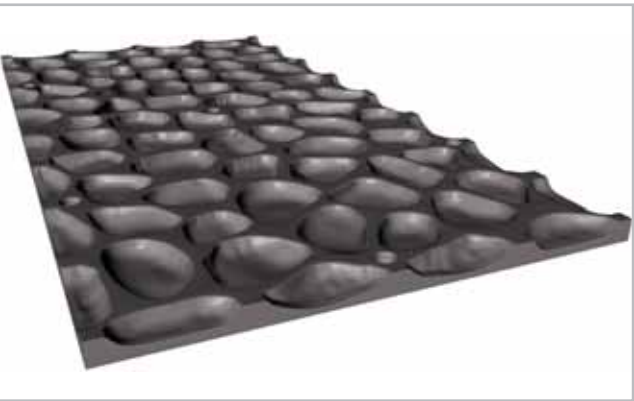
The River Stone panels replicate a mountain stream pebble appearance on a concrete surface.



ADVANTAGES

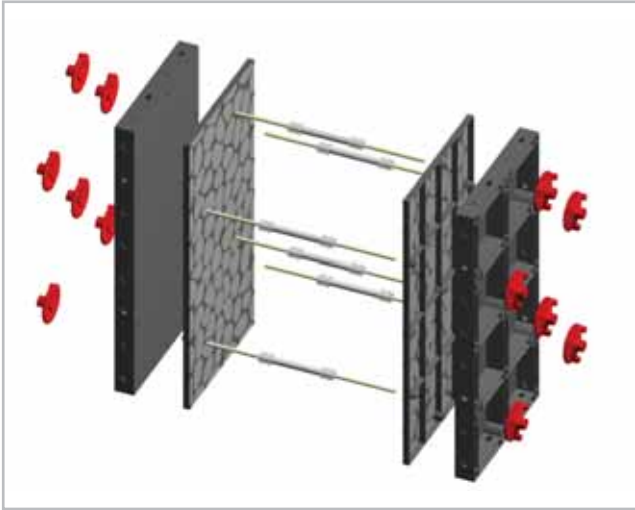
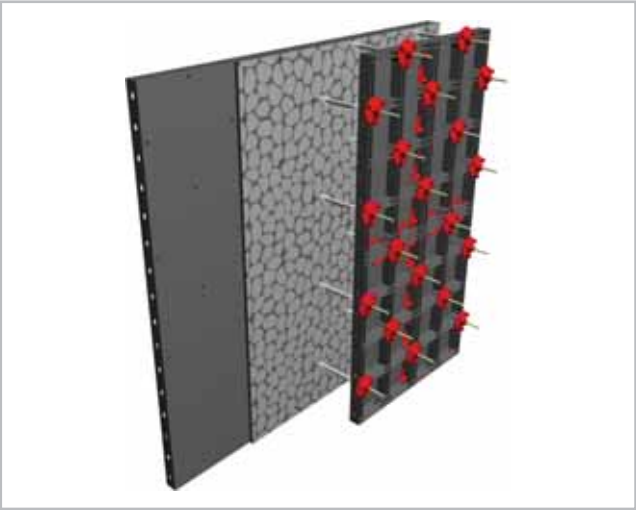
- IMMEDIATE RESULT
- HIGH QUALITY CONCRETE FINISH
- HIGH PRODUCTIVITY
- EASY ASSEMBLY
- REDUCED MAINTENANCE
- REUSABLE
- DOES NOT INHIBIT THE NORMAL USE OF THE SUPPORT GEOPANEL®

GEOPANEL ART®, thanks to its simplicity and ease of use, helps to save time and money. Result is immediate and no further operation is required if the concrete surface is left as poured. Lightweight, easy to handle, **GEOPANEL ART®** has an excellent cost / benefit ratio.



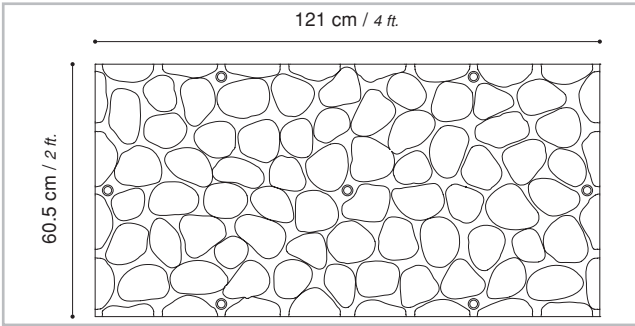
GEOPANEL ART® HOW TO ASSEMBLE

GEOPANEL ART® panels are attached to the **GEOPANEL®** 120 x 60 cm (4' x 2') panels using the tie-rod holes as latching points, while still permitting the use of the standard tie-rods and washers. Plastic wall spacers are inserted between the panels and are lost in the concrete pour. The panels can be assembled in any combination without any interruption of the decorative texture. **GEOPANEL ART®** are portable and are from **GEOPANEL®** after use. As for all **Geoplast** formwork, cleaning is done just with water.



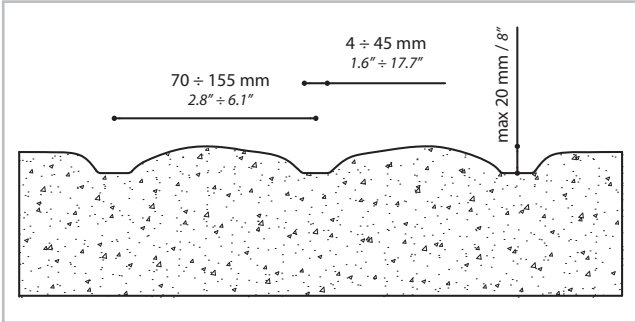
APPLICATIONS

- FENCING WALLS
- INDOOR AND OUTDOOR CONCRETE SURFACES
- RETAINING WALLS



TECHNICAL DATA

WALL TYPE	River stone
MATERIAL	ABS
DIMENSIONS	121 x 60.5 x H3 cm (2.6 actual) 4' x 2' x 1" (1.02" actual)
MAX. CONCRETE PRESSURE	60 kN / 8.7 psi
PANEL WEIGHT	8 kg / 17.6 lbs
COLOUR	Grey



Disclaimer: the values shown in this brochure are for guidance only. They are not meant to be used for design criteria. Their use and reliance thereon for any purpose by anyone is entirely voluntary and at the sole risk of the user. GEOPLAST is not responsible for any loss, claim, or damage resulting from their use.