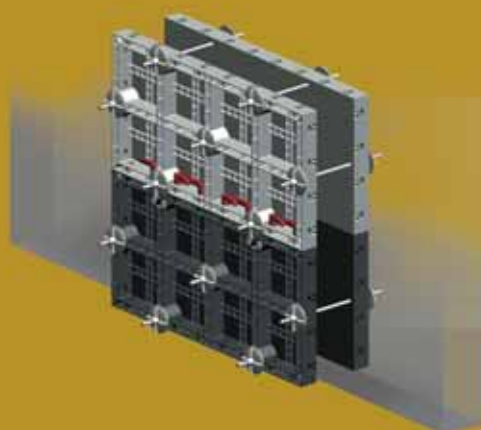




# GEO PANEL



The universal forming panel



**casseforme**  
formwork

[www.geoplast.it](http://www.geoplast.it)



# GEOPANEL® ADVANTAGES

## SPEED

Each **GEOPANEL®** weighs just 11 kg, and the system can be erected by a single person. Light and easy to assemble, the system uses fast-lock nylon handles that firmly join the forms with a simple 90 degree turn.

**GEOPANEL®** does not need any releasing agents nor any special treatment while assembling or during the pour.

## INSTALLATION

The outer side of the panels is ribbed to make posting and plumbing easier.

The panels have holes to fit standard off-the shelf tie-rods and spacers, the same as used for the traditional steel panels.

## DISMANTLING

Concrete does not stick to plastic, thus stripping is extremely easy, and it's possible to cleanse the formwork simply with water, completely avoiding detergents.

## STORAGE

**GEOPANEL®** can be completely disassembled and does not need to be stored in a dry environment.

## MODULARITY

All elements have a standard 60 cm high and are 20, 25, 30, 40 or 120 cm long. There is no need to cut the panels to length thanks to the modularity of the system.

## HANDLING ON SITE

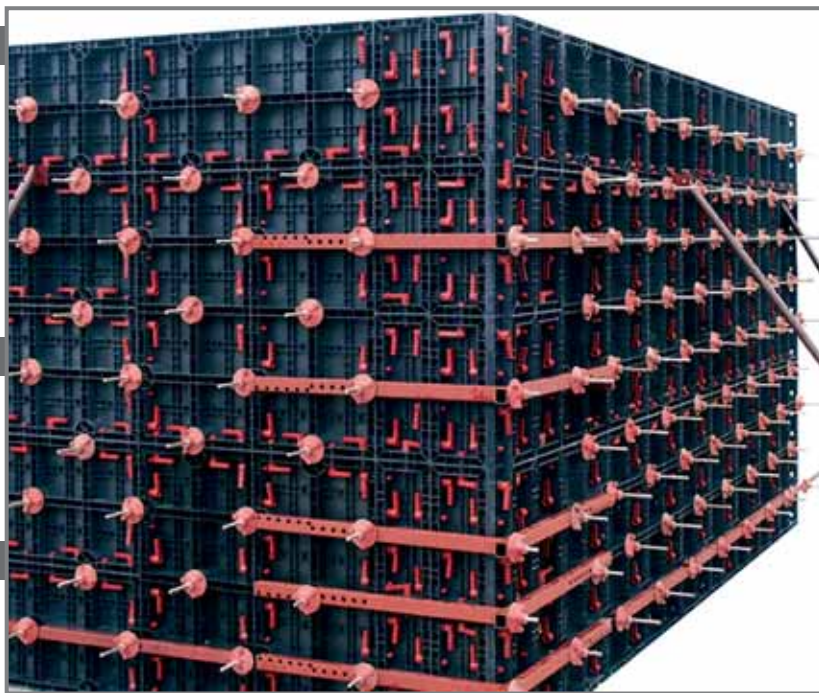
The material can be quickly dismantled and easily handled within the construction site without having to use a crane thanks to its low weight and the fast-unlock handles.

## REUSAGE

**GEOPANEL®** is cost effective as it requires very little maintenance compared to traditional systems and it can be reused when correctly cleaned and properly used.

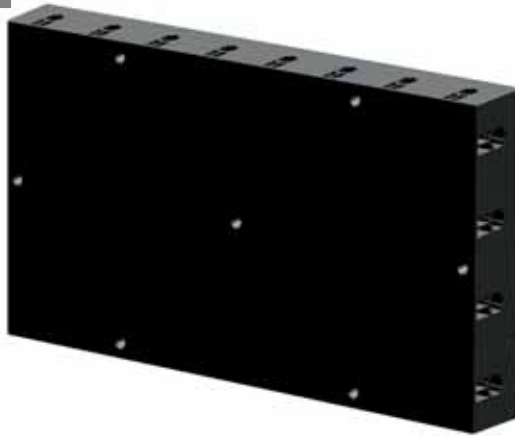
## RESULT

Concrete surfaces poured with **GEOPANEL®** can be left in sight without any further rework.



# GEOPANEL® SYSTEM - ELEMENTS AND ACCESSORIES

120



**REUSABLE**

**MAIN ELEMENT** 120 X H 60 cm (act. size 121 x 60.5 cm)  
MATERIAL: ABS WEIGHT: 11 kg

20



**ELEMENT** 20 X H 60 cm (act. size 20.2 x 60.5 cm)  
MATERIAL: ABS WEIGHT: 2.25 kg

25



**ELEMENT** 25 X H 60 cm (act. size 25.2 x 60.5 cm)  
MATERIAL: ABS WEIGHT: 2.30 kg

30



**ELEMENT** 30 X H 60 cm (act. size 30.3 x 60.5 cm)  
MATERIAL: ABS WEIGHT: 2.80 kg

40



**ELEMENT** 40 X H 60 cm (act. size 40.4 x 60.5 cm)  
MATERIAL: ABS WEIGHT: 3.80 kg

**INN.  
COR.**



**INNER CORNER ELEM.**  
30 X 10 X H 60 cm (act. size 30.3 x 10 x 60.5 cm)  
MATERIAL: ABS WEIGHT: 3.10 kg

**OUT.  
COR.**



**OUTER CORNER ELEM.**  
33 X H 60 cm (act. size 25.2 x 60.5 cm)  
MATERIAL: ABS WEIGHT: 3.20 kg

**GEOPANEL®**  
ITEMS AND ACCESSORIES  
IN THE SYSTEM:

MATERIAL	Flexural modulus (N/mm <sup>2</sup> )	Tensile strength (N/mm <sup>2</sup> )	Coefficient of thermal expansion
ABS	2100	45	0.05 (mm/m/°C)
PE HD	780	22	0.2 (mm/m/°C)
Nylon	2200	70	7 - 10 (1/K 10 <sup>-5</sup> )

1

**HANDLE**  
MATERIAL: Nylon  
WEIGHT: 0.101 kg



2

**SPACER**  
15 - 20 - 25 - 30 - 35 - 40  
MATERIAL: PE HD  
WEIGHT: 0.08 kg



3

**CAP**  
for spacers  
MATERIAL: PE HD  
WEIGHT: 0.006 kg



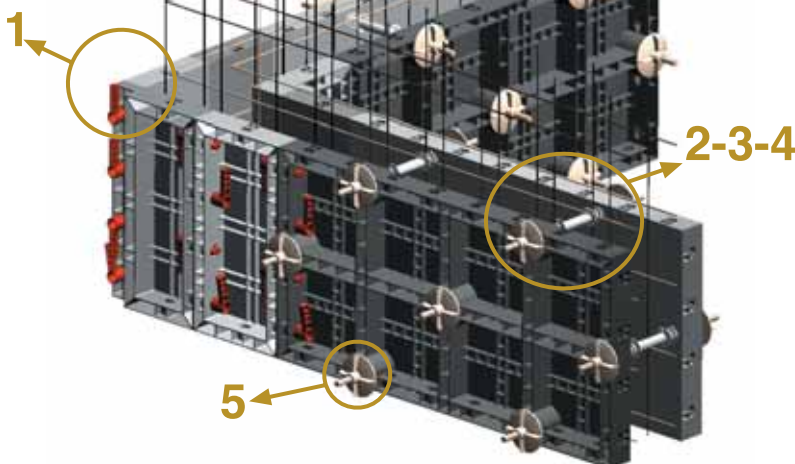
4

**TIE-ROD** ø17  
MATERIAL: Steel  
WEIGHT: 1 kg



5

**WASHER**  
for tie-rods  
MATERIAL: Nylon + steel  
WEIGHT: 0.4 kg





# GEOPANEL® APPLICATIONS

## WALLS

Using **GEOPANEL®** it is possible to pour straight walls up to 40 cm thick and 3 meters high.

## CORNERS

Combining the set of special corner and compensation panels, right angle corners, three way T- and four way cross wall intersections can be made easily.

## FENCE WALLS

The low weight and its modularity make **GEOPANEL®** ideal for fence walls as it's possible to move large gangforms by hand.

## BASINS

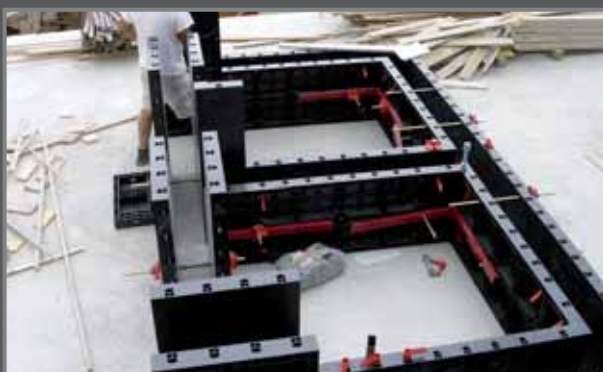
The low weight of **GEOPANEL®** simplifies the pouring of tanks, basins or swimming pools in areas with limited- or no access to heavy equipment.

## DOORS AND WINDOWS

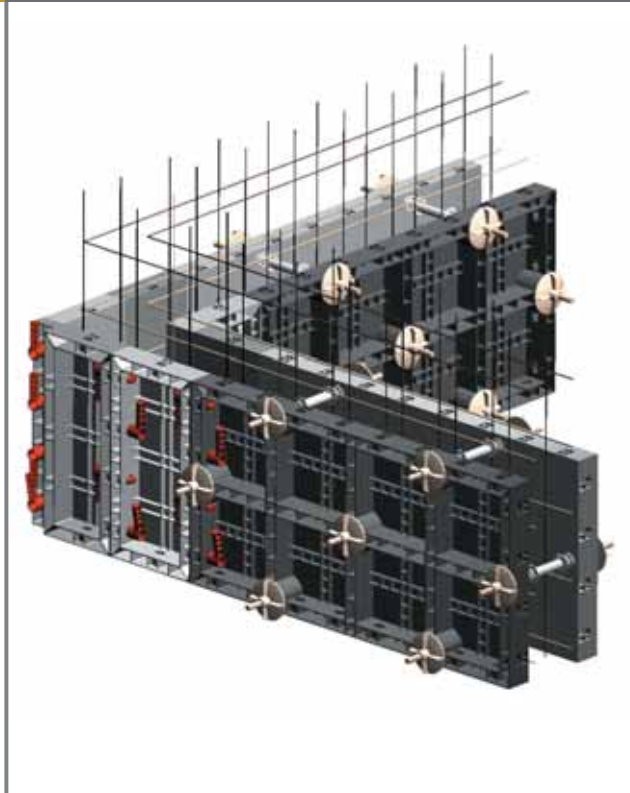
**GEOPANEL®** is suitable for the use of door and window-bucks. The spacers allow easy fastening and plumbing of the timber- or plastic bucks.

## ELEVATOR SHAFTS

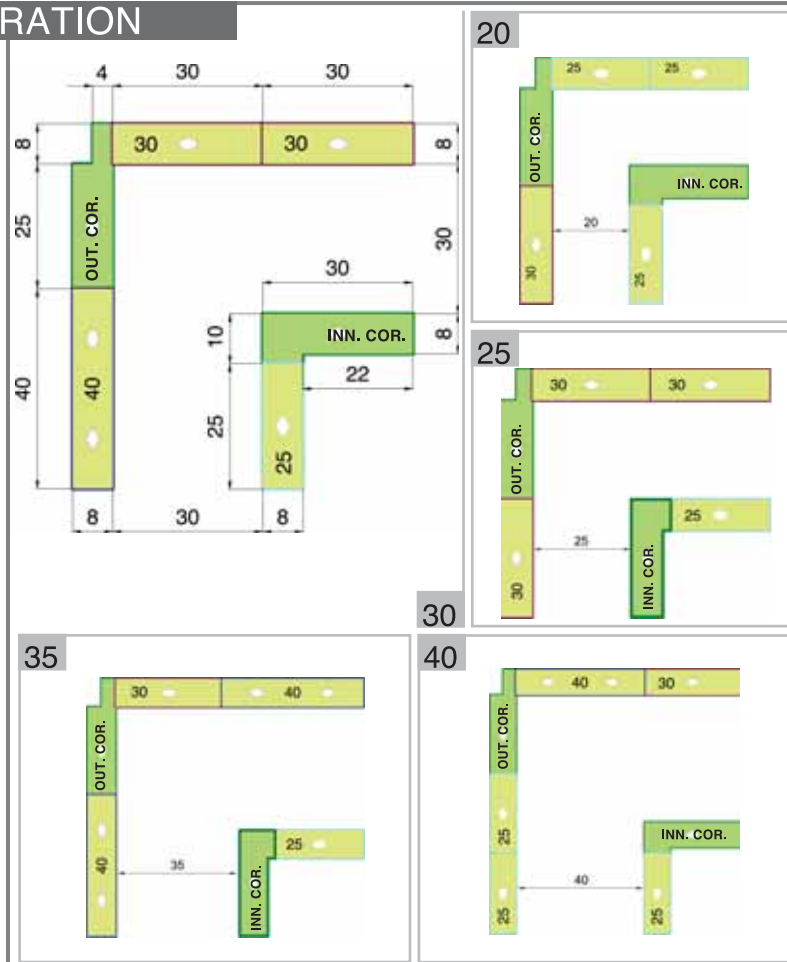
With **GEOPANEL®** elevator shafts are formed without the aid of a crane: an easy, fast and precise job done by hand.



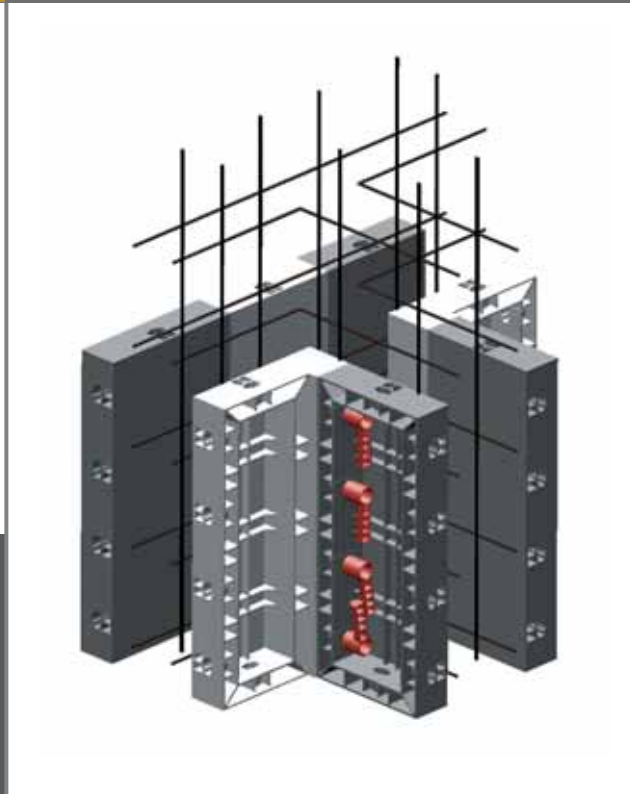
## GEOPANEL® CORNER CONFIGURATION



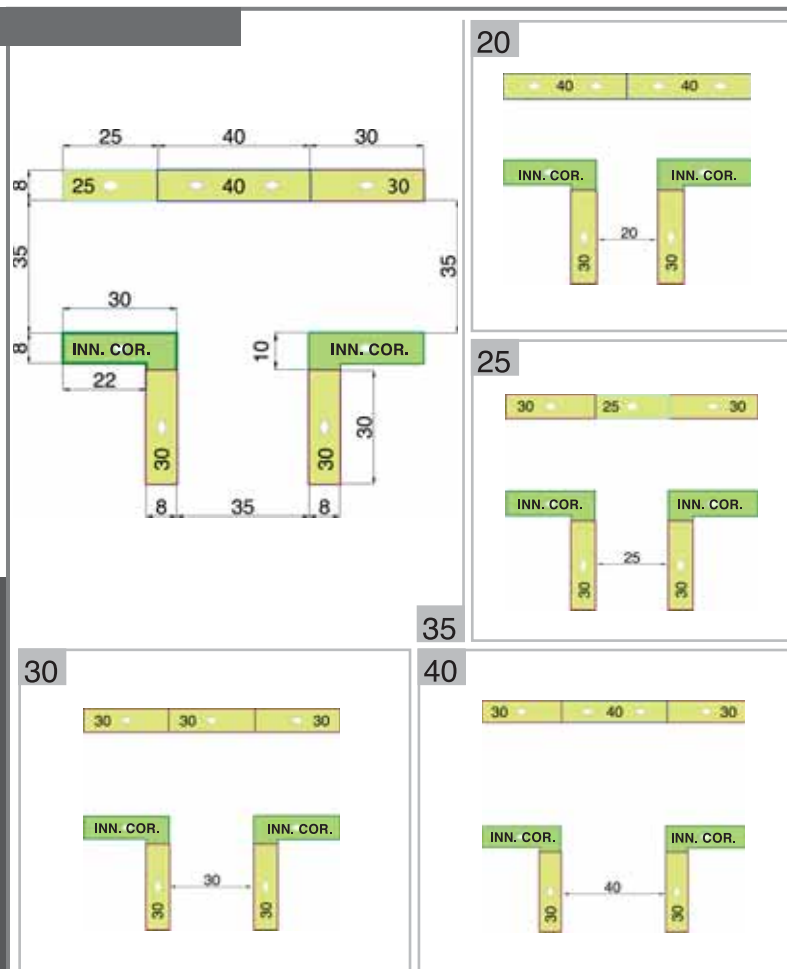
Combining the set of special corner- and compensation-panels, four way cross wall intersections of 10, 15, 20, 25, 30, 35, 40 cm thickness can be realised.



## GEOPANEL® T-INTERSECTIONS

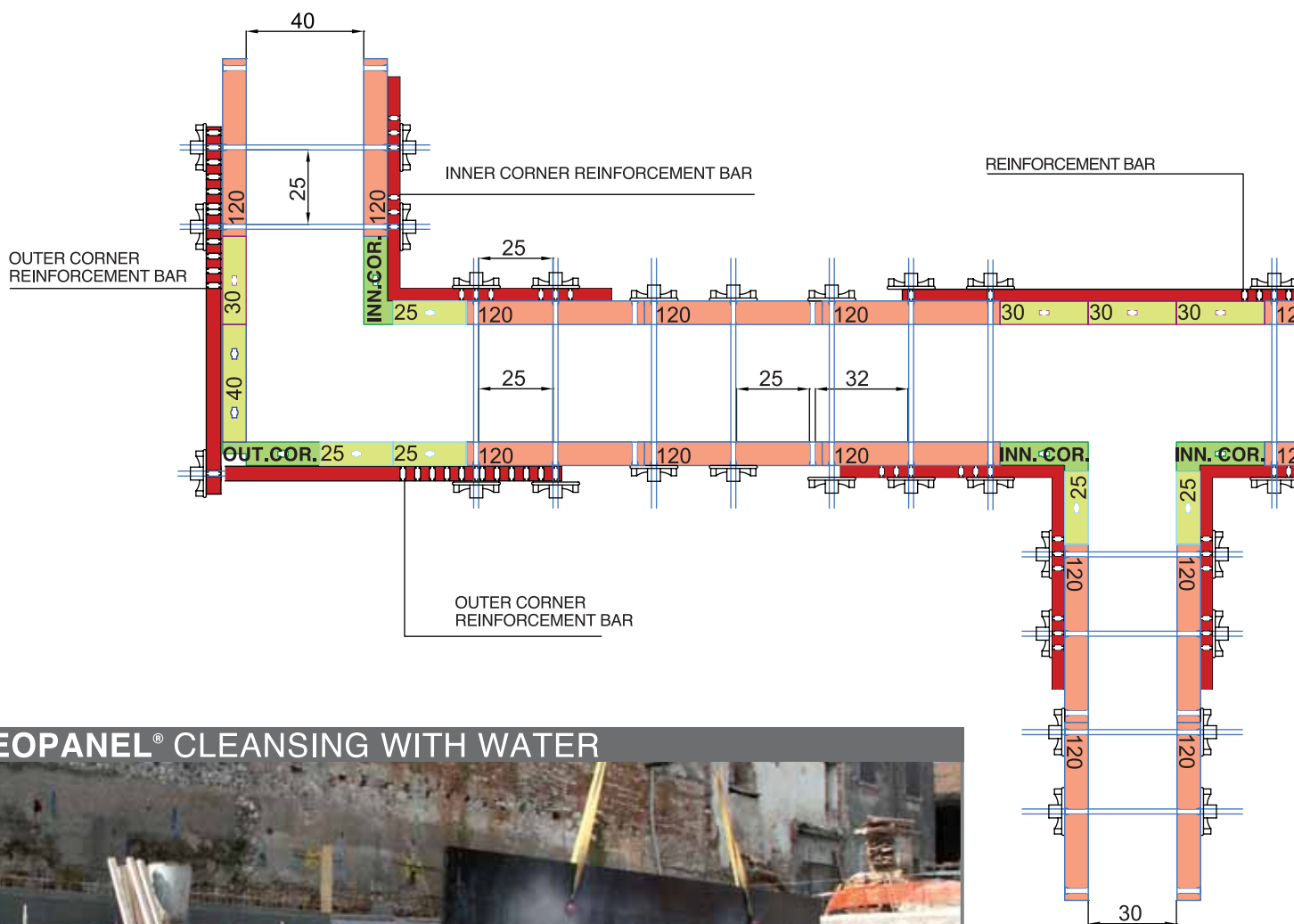


Combining the set of special corner- and compensation-panels, three way T wall intersections of 20, 25, 30, 35, 40 cm thickness can be realised.



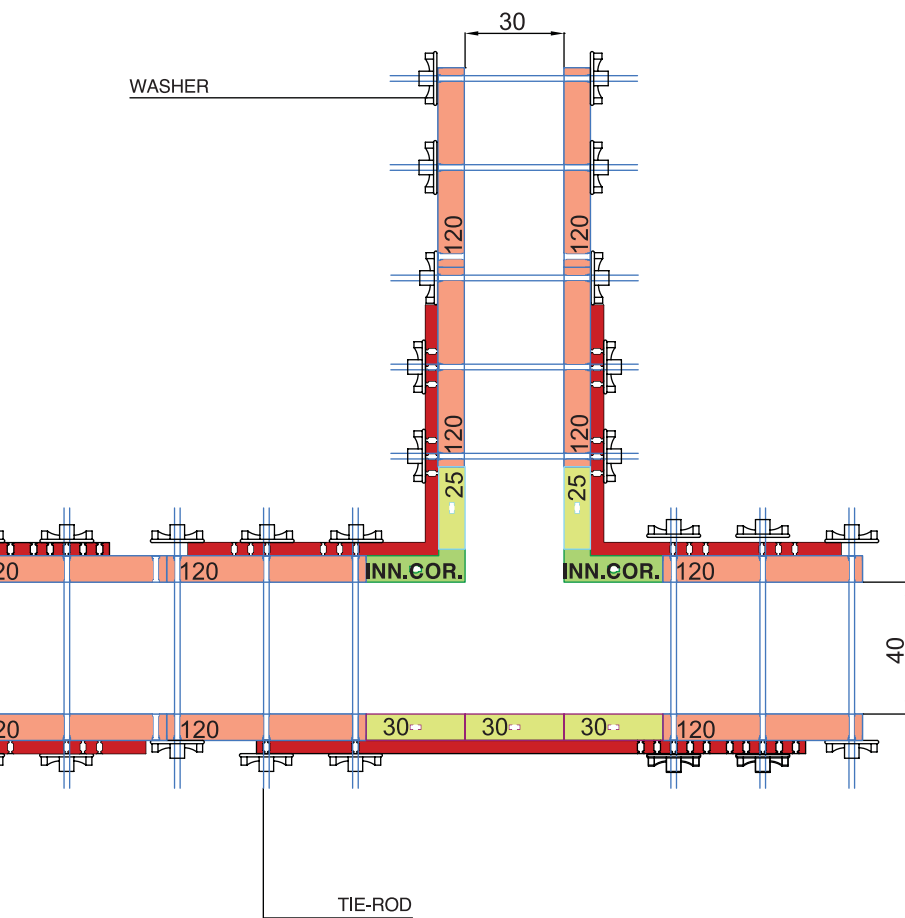


## GEOPANEL® ENGINEERING

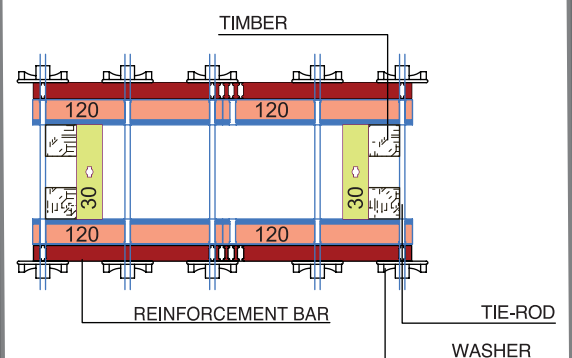


## GEOPANEL® CLEANSING WITH WATER





## COLUMNS FORMED WITH GEOPANEL®



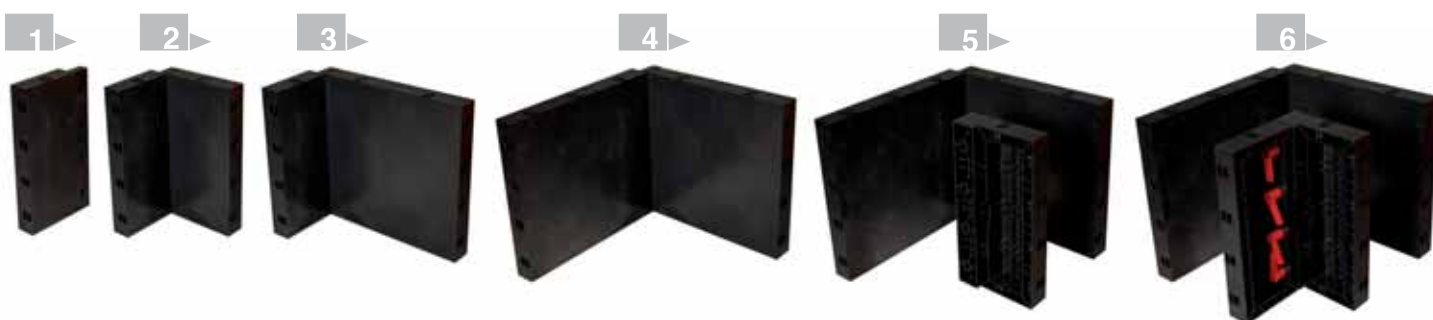
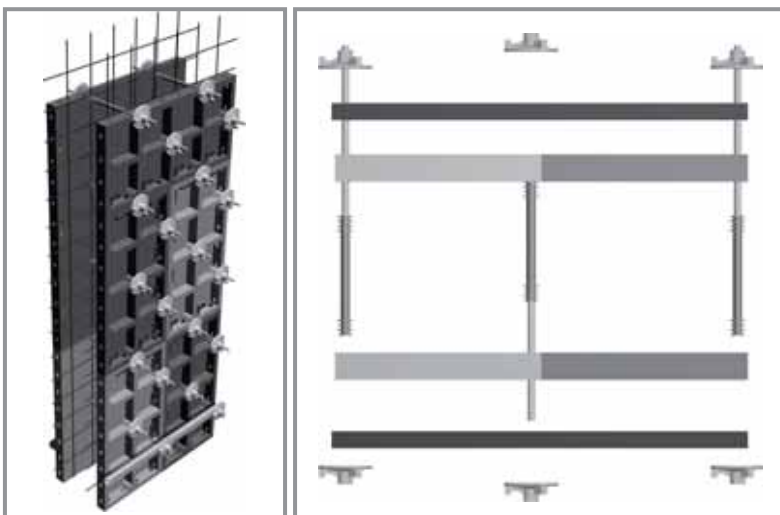


## GEOPANEL®

### EXAMPLE

**GEOPANEL® STRAIGHT WALL 120 cm x H 3 m**  
DOUBLE WALL (7.2 m² OF PANELS)

WALL THICKNESS	20 - 25 - 30	30 - 35
<b>GEOPANEL® 120</b>	10 pcs.	10 pcs.
TIE RODS L 75	20 pcs.	18 pcs.
TIE RODS L100	-	2 pcs.
SPACERS	20 pcs.	20 pcs.
WASHERS	40 pcs.	40 pcs.
PLUGS	70 pcs.	70 pcs.
REINFORCEMENT BAR	2 pcs.	2 pcs.
HANDLES	120 pcs.	120 pcs.



### CUSTOMER SERVICE: PROJECT DEVELOPMENT

Send your projects in DWG format to: [ufficiotecnico@geoplast.it](mailto:ufficiotecnico@geoplast.it)

### ASSEMBLY HANDBOOK AND TECHNICAL SPECIFICATION

Available in our website [www.geoplast.it](http://www.geoplast.it) in the "Area download" section.

Disclaimer: the values shown in this brochure are for guidance only. They are not meant to be used for design criteria.

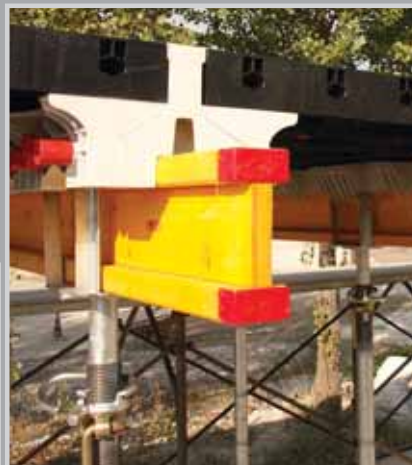
Their use and reliance thereon for any purpose by anyone is entirely voluntary and at the sole risk of the user. GEOPLAST is not responsible for any loss, claim, or damage resulting from their use.

## GEOSKY® SLABS

### ADVANCED-DISMANTLING PLASTIC FORMWORK SYSTEM

**GEOSKY®** is a system of plastic formworks used to pour concrete slabs. Thanks to its combination of main beam and sliding wedge, this new and innovative system makes set-up and dismantling faster, and reduces the turn-around time of the equipment in the construction site.

It is composed by **GEOPANEL®** 120 x 60 cm panels (weighing each max. 11 kg) and by 3 plastic beams to place upon the traditional H 20 wooden truss: this system allows to advance the stripping operation. **GEOSKY®** is the ideal solution to build any kind of slab: bidirectional, full or lightened.



Authorized dealer:



Manufactured by:

**GEOPLAST S.p.A.**

Via Martiri della Libertà, 6/8

35010 Grantorto (PD) - Italy

tel +39 049 9490289 - fax +39 049 9494028

e-mail: [geoplast@geoplast.it](mailto:geoplast@geoplast.it) - [www.geoplast.it](http://www.geoplast.it)

REV. 003  
ST.10/2010